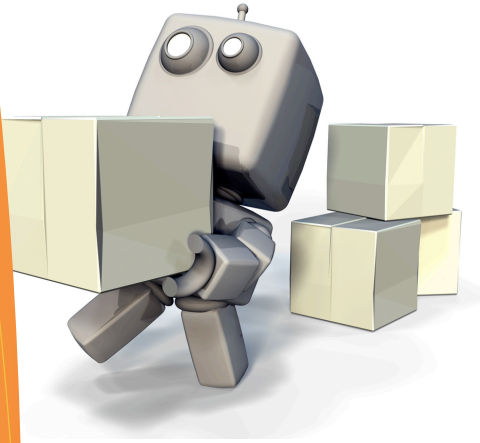


Service-Oriented Analysis and Design
MODEL ACCELERATOR



Technology working for you

POTENTIAL AND PROMISE REALIZED

Realizing the potential and promise of Service-Oriented Architecture (SOA) - business flexibility and agility - is only possible through the successful application of Service-Oriented Analysis and Design (SOAD).

The SOAD Model Accelerator guides practitioners in creating best-practice based SOA Solutions, reducing mechanical effort, enhancing solution focus and magnifying creativity and problem solving skills.

HIGHLIGHTS

- IMPROVE SOLUTION QUALITY
- BOOST PRODUCTIVITY BY ELIMINATING REPETITIVE MECHANICAL STEPS
- BRING SOA BEST PRACTICES TO LIFE (SOAML, RATIONAL SOMA, BUSINESS MODELING, AND SOA GOVERNANCE,)
- REDUCE LEARNING CURVE WHILE ENSURING ADHERENCE TO BEST PRACTICES
- SUPPORT SOA GOVERNANCE BY AUTOMATING TRACEABILITY AND REPORTING
- MAGNIFY IMPACT OF SKILLED RESOURCES

automating solutions for your business needs

FOG AND FRICTION

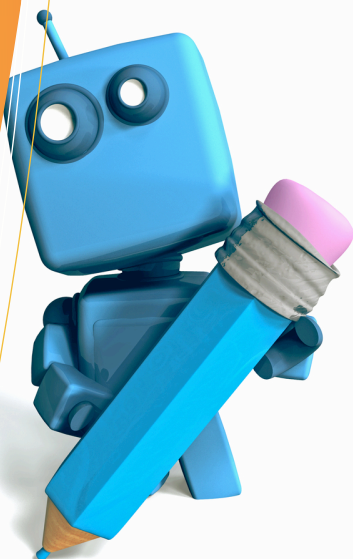
Too many SOA projects fail. We face the friction of starting with a blank piece of paper. What should be modeled? How should it be modeled? And once we get started, we find the effort repetitive and requiring too many clicks.

As the project progresses - how can we ensure best practice application and adherence? How can we determine where and how the solution aligns with the needs of the business?

BRINGING SOA BEST PRACTICES TO LIFE

The Accelerator surfaces as a set of automations that deploy within IBM Rational Software Architect for WebSphere Software - integrating with the SOA capabilities of the platform. The automations include UML Patterns, Model Constraints and Reports. These components work together - eliminating Fog and Friction - helping you to create SOA solutions by focusing on:

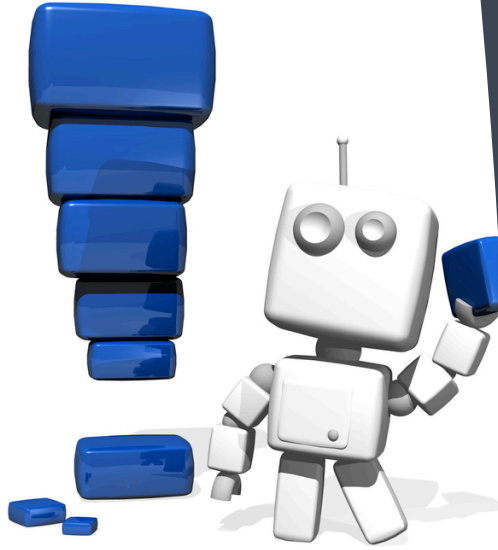
- Business Modeling
- Service Identification
- Service Specification
- SOA Governance



THE IMPORTANCE OF ARCHITECTURE

The SOAD Model Accelerator, places a strong emphasis on architecture - the most significant decisions regarding the creation of SOA solutions.

By using the SOAD Model Accelerator, Architects are more effective in creating SOA solutions that are based on the needs of the business, are better designed and delivered more quickly.



HERE. THERE. EVERYWHERE.

Local? Cloud? Both? The choice is yours.

The SOAD Model Accelerator is certified as Ready for Rational Software - highlighting the quality of the integration with Software Architect for WebSphere. The Accelerator quickly and seamlessly integrates with your installation of Software Architect for WebSphere.

We are also Powered by CloudOne. Providing you with an elastic, on demand, manageable cloud-based solution for development workbenches.

GET STARTED TODAY

Visit The Emphasys Group [Marketplace](#) to:

- Download the FREE ebook "Designing Solutions using the SOAD Model Accelerator".
- Evaluate and purchase.



Ready for

IBM | Rational.

software

powered by
CloudOne 



AUTOMATE

Let automation handle the repetitive, mechanical work.

Let people to do what people do best, be creative problem solvers.



ACCELERATE

Assess. Report. Generate. Guide. Automate. Bring them all together and accelerate the creation of your SOA solution.



AMPLIFY

Amplify the impact of Rational Software Architect for WebSphere Software v8.0.4 or Rational Software Architect v8.0.4 with the Software Architect Extension for SOA and WebSphere



DELIVER

The SOAD Model Accelerator quickly provides a positive ROI. Measured not just in getting done fast, but also in delivering the right solution.



Velocity = (Automation + Reuse + Agility)^{Emphasys}

The Emphasys Group logo and Service-Oriented Analysis and Design Model Accelerator are trademarks of Enterprise Systems Consulting and Services Corp., d.b.a. The Emphasys Group.

The CloudOne logo and Powered by CloudOne are trademarks of CloudOne Corporation.

IBM, the IBM logo and Rational are trademarks of International Business Machines Corporation in the United States, other countries or both. If these and other IBM trademarked terms are marked on their first occurrence in this information with a trademark symbol (® or TM), these symbols indicate U.S. registered or common law trademarks owned by IBM at the time this information was published. Such trademarks may also be registered or common law trademarks in other countries. A current list of IBM trademarks is available on the web at "Copyright and trademark information" at ibm.com/legal/copytrade.shtml

Disclaimer: The information contained in this documentation is provided for informational purposes only. While efforts were made to verify the completeness and accuracy of the information contained in this documentation, it is provided "as is" without warranty of any kind, express or implied. In addition, this information is based on The Emphasys Group's current product plans and strategy, which are subject to change by The Emphasys Group without notice. The Emphasys Group shall not be responsible for any damages arising out of the use of, or otherwise related to, this documentation or any other documentation. Nothing contained in this documentation is intended to, nor shall have the effect of, creating any warranties or representations from The Emphasys Group (or its suppliers or licensors), or altering the terms and conditions of the applicable license agreement governing the use of The Emphasys Group software.



Web: <http://www.theemphasysgroup.com/contact-us/>
Email: info@emphasysgrp.com
Phone: 1.888.784.7759
Twitter: @EmphasysGroup